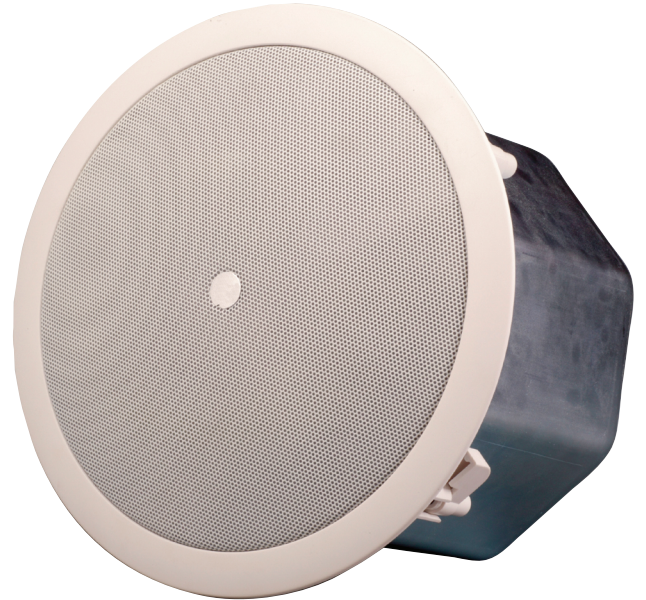




## Overview

The C165W is a 60-watt 6.5-inch high performance ceiling mount loudspeaker. Ideal for any background music or paging system where superior sound quality is a priority, this speaker is made for louder club or restaurant / retail environments. Featuring an innovative design and employing high quality materials, the C165W maintains excellent performance from a compact ceiling loudspeaker. The C165W contains a coaxial 6.5-inch woofer and 3/4-inch titanium coated tweeter. Built in 70-volt taps at 7.5, 15, 30 or 60-watt operation means that high fidelity full range sound can be achieved over an extremely wide coverage pattern area. Virtually any 70-volt amplification or paging system, including the Coliseum CA1 or CA1T can drive the C165W.



## Features

- 60-watt 6.5-inch high performance ceiling mount loudspeaker
- 70-volt taps at 7.5, 15, 30 or 60-watts
- 100-volt taps at 15, 30 or 60-watts
- Coaxial 6.5-inch woofer and 3/4-inch titanium coated tweeter



## Specifications

|                                 |                                  |
|---------------------------------|----------------------------------|
| System Type                     | Celing Speaker                   |
| Active or Passive               | Passive                          |
| Program Power (Watts)           | 60                               |
| Biampable                       | No                               |
| Nominal Impedance (Ohms)        | 70 Volt Transformer              |
| Sensitivity (dB @1Watt/1m)      | 92                               |
| Max SPL (dB)                    | 110                              |
| Frequency Response (Hz +/- 3dB) | 100 - 20,000                     |
| Driver Configuration            | 6.5-inch woofer 3/4-inch tweeter |
| HF Dispersion (°H x °V)         | 120                              |
| Inputs - Screw Terminal         | Yes                              |
| Enclosure Materials             | Aluminum / ABS Plastic           |
| Grille                          | Metal                            |
| Dimensions (DWH xbackW, inches) | 10 x 10 x 7                      |
| Dimensions (DWH xbackW, cm)     | 25 x 25 x 18                     |
| Weight (lbs/kg)                 | 7.3 / 3.3                        |

*Specifications subject to change without notice*